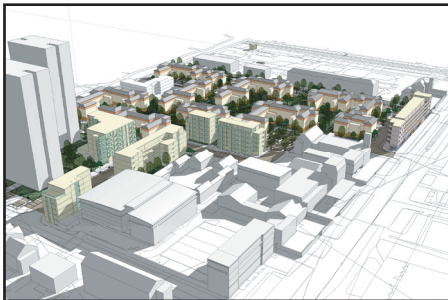
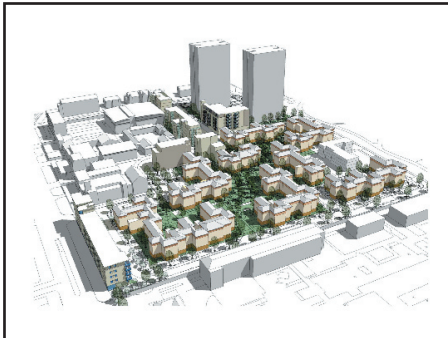


## Planning Application



## British Street Estate

**Location:** Mile End, East London  
**Client:** Telford Homes Plc & EastendHomes  
**Architect:** ECD Architects  
**Completed:** Spring 2009

Leaside Regeneration's Planning Team was appointed by Telford Homes Plc to advise on and submit a planning application for the comprehensive regeneration of the British Street Estate, south of Mile End Road in Tower Hamlets, London, E3.

The 3.75 hectare estate, which currently contains 500 homes, was developed in the early 70's and was now in need of major investment to bring dwellings up to Decent Homes Plus standard. EastendHomes, the registered social landlord who received the estate from the Council, will invest more than £22m in a comprehensive package of improvements including new bathrooms and kitchens, enhanced thermal insulation and new security measures. They also have plans for the complete transformation of the environmental quality of the estate, introducing over-cladding of buildings, green space enhancements and new children's play areas.

The proposal, which in addition to the refurbishment of existing high and low-rise buildings, includes the introduction of 185 new residential units, a new community centre and 6 retail units. The scheme was granted planning permission in January 2007.