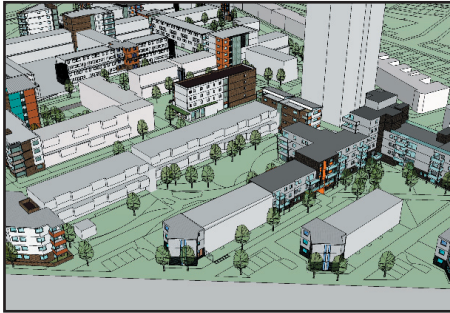


Planning Application



Bede Estate

Location: Mile End, Poplar, East London
Client: Telford Homes Plc & EastendHomes
Architect: ECD Architects

Leaside Regeneration's Planning Team was appointed by Telford Homes plc to advise on and submit a planning application for the comprehensive regeneration of the Bede Estate, off Burdett Road in Tower Hamlets, London, E3.

The Estate was transferred to EastendHomes who prepared a masterplan which includes extensive refurbishment of the 366 existing homes to achieve Decent Homes Plus standard and the erection of 236 new residential units containing studios, 1, 2, 3, 4, 5 and 6 bedrooms, a new community centre and new retail and storage floorspace.

A planning application for the scheme was submitted in October 2008 and was approved by the London Borough of Tower Hamlets in February 2009.